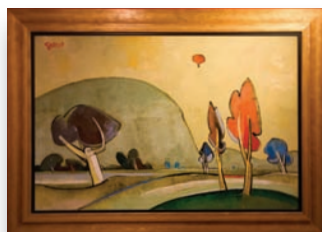




# INVESTMENT IS KEY

Chris McCabe tells us about an artist whose work has international quality and can be found in prestigious collections throughout the world. Photography: LottieDesigns.com

**M**y focus this month is on fine painter and sculptor, Geoffrey Key whose very name evokes a myriad of fascinating images of horses, jesters, dancers, figure groups, still-life and landscapes.



Observers and collectors have widely commented that his understanding of form and colour, his brilliant draughtsmanship and creative mind have produced works that compare with some of the best of 20th Century British painters.

Furthermore, his work has an international quality - stylistically it is at home as much in New York, Paris, Rome or Tokyo as it is in the UK. It has superceded national boundaries, which is why it is to be found in prestigious collections throughout the world.

## A COLLECTOR'S PERSPECTIVE

David Anderson, a physician in Hong Kong, and an avid collector of fine art.

*"Key, is very much a collector's artist. His work has been widely exhibited and acclaimed across the world, and is in many important collections where it hangs alongside works by other household names, whose main merit may well be their signature and whose 'auction value' is astronomical. His work more than holds its own, and its honesty and vigour stands out in the best artistic company."*

## RECENT PRESS AND MAGAZINE COMMENTS

### Daily Post

*"Geoffrey Key is an exception; his latest book, together with an extensive exhibition of his work, prove he is not only very much alive, but continuing to satisfy an international list of clients, while prices of his work at auction spiral ever upwards."*

### Fresh Magazine

*"Geoffrey Key is an artist who quietly and diligently works daily in*



*his studio. Meanwhile, serious art collectors avidly seek to acquire his works both in his native UK and worldwide. He has been accurately and with true honesty been described as one of the most important and valid British artists of his time."*

## BBC Homes and Antiques Magazine

*"He has been described as a 'tough romantic'; his take on the human form is highly original. We're finding demand growing for pictures by good northern artists like Geoffrey Key," explained Peter Wilson's painting specialist, Stephen Sparrow. "Prices look set to go on rising."*



## AN AUCTIONEER'S PERSPECTIVE

### Peter Wilson's Auctioneers

Contemporary paintings by living northern artists took some of the top prices in Nantwich auctioneers Peter Wilson's Fine Art sale (July). Vibrant works by Manchester artists William Turner and Geoffrey Key attracted strong interest from dealers and a number of new young collectors, some of them bidding on their computers via the internet.

It is my considered opinion that in years to come, owning an original Geoffrey Key drawing will be the dream of every serious collector of 20th century European drawings - perhaps by then only a wealthy few will be able to fulfil that dream. ■

Art Décor Gallery  
6 The Arches  
Whalley BB7 9SG  
01254 824840  
www.artdecorwhalley.co.uk